



RURAL SAFETY

Presented by: Douw Pelser & Deidre Carter
26 February 2020



BACKGROUND



- ▶ Important to cut the noise and rhetoric – let's be realistic and pragmatic
- ▶ Today there are more People employed in the Private Security Industry than there are in the whole of our mining industry.
- ▶ There are twice as many people employed in the private security industry than what there are in the Police
- ▶ They are better armed, better equipped & better resourced.



BACKGROUND



- ▶ There intelligence gathering beats that of SAPS
- ▶ Today in the farming industry Farmers who can afford it rely primarily on Private security Companies

According to the ISS:

- ▶ Farm attacks and farm murders have increased in recent years in line with the general upward trend in South Africa's serious and violent crimes.
- ▶ These violent crimes against people living and working on farms share similarities with the trio crimes category of house robbery, business robbery and carjacking, which are treated as priority crimes.



BACKGROUND



- ▶ The police have set up task teams that specialise in investigating and addressing these three crimes.
- ▶ These violent crimes against people living and working on farms share similarities with the trio crimes category of house robbery, business robbery and carjacking, which are treated as priority crimes.
- ▶ Like the trio crimes, farm attacks and farm murders should be treated as a separate crime category;



BACKGROUND



- ▶ Be regarded as a priority crime; and need a particular solution;
- ▶ There should be a dedicated strategy for farm attacks and farm murders that targets the criminal groups responsible – similar to how the 'three crimes' are managed.
- ▶ Governments recently launched National Rural Safety Strategy (launched here in Limpopo by Minister Cele) does just this.



BACKGROUND



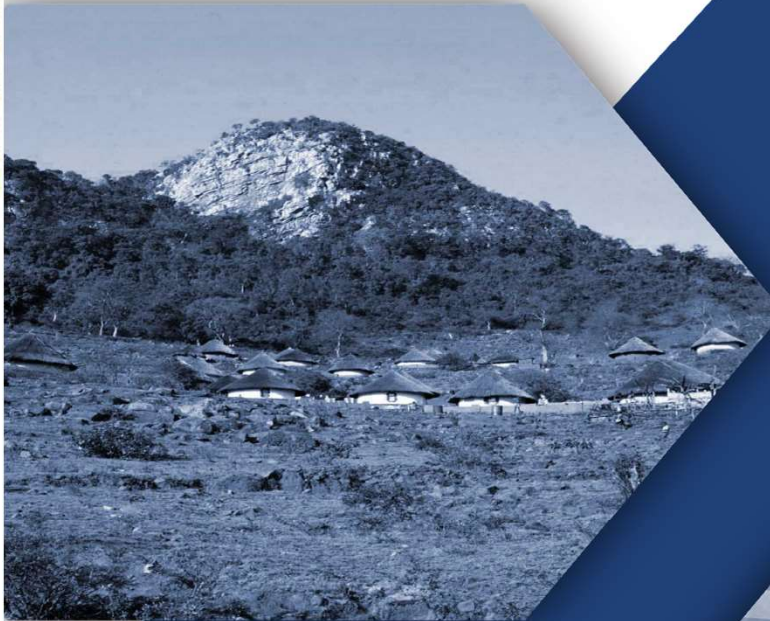
- ▶ The NRSS does recognize Farm attacks and Murder as a separate priority crime; and it does set out a particular solution.
- ▶ All our National Development Plans – starting from the RDP to the NDP, and our Provincial Development Plan are **premised on the need for a partnership – a resourcing of our collective goodwill, skills and capacities – for the common good.**
- ▶ As Agri Limpopo we support the strategy but we need to see it being **resourced and implemented.**



The National Rural Safety Strategy



The strategy aims to address rural safety as an integrated day-to-day policing approach by creating a safe and secure rural environment





FORGING PARTNERSHIPS

- ▶ Limpopo Rural Safety Forum
 - ▶ Agri Limpopo
 - ▶ TLU
 - ▶ AFASA
 - ▶ NAFU
 - ▶ SAPS – (Col van Staden, Major General Scheepers)
- ▶ Monthly Meetings
- ▶ Forging Partnerships with Communities





FORGING PARTNERSHIPS

- ▶ National Rural Safety Strategy
 - ▶ Blueprint
 - ▶ Implementation
 - ▶ More Visibility
- ▶ Agri Securitas
 - ▶ Camera installations
- ▶ Bio-Security
 - ▶ Robbery of Stock
 - ▶ Stock Theft





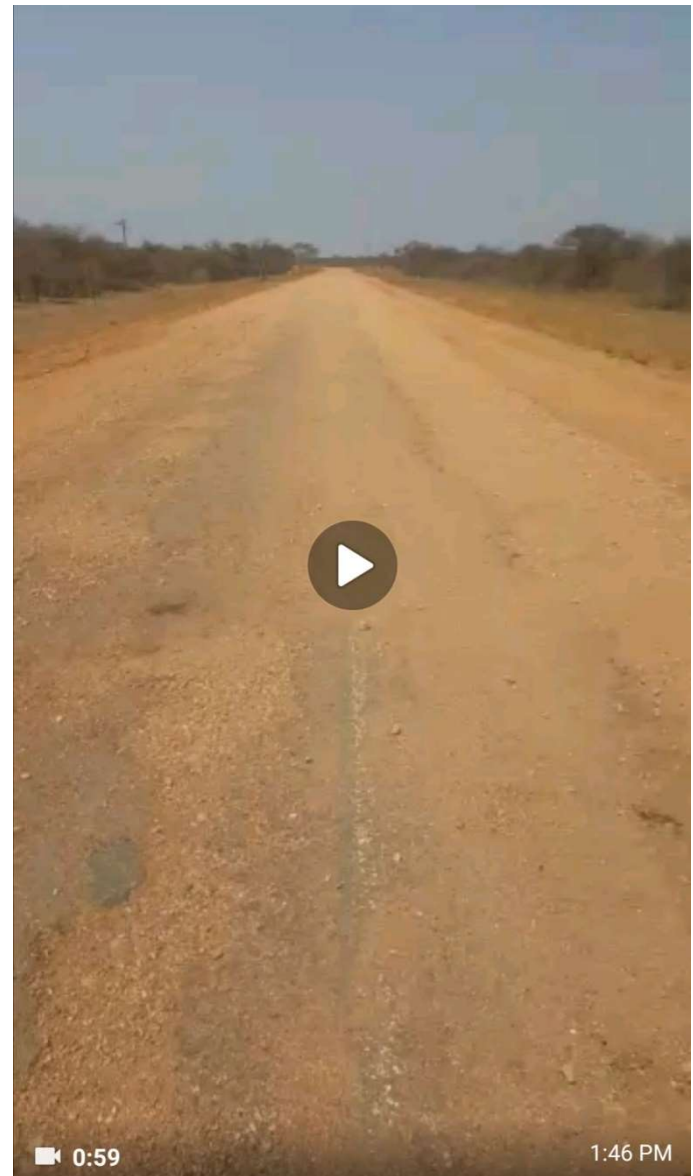
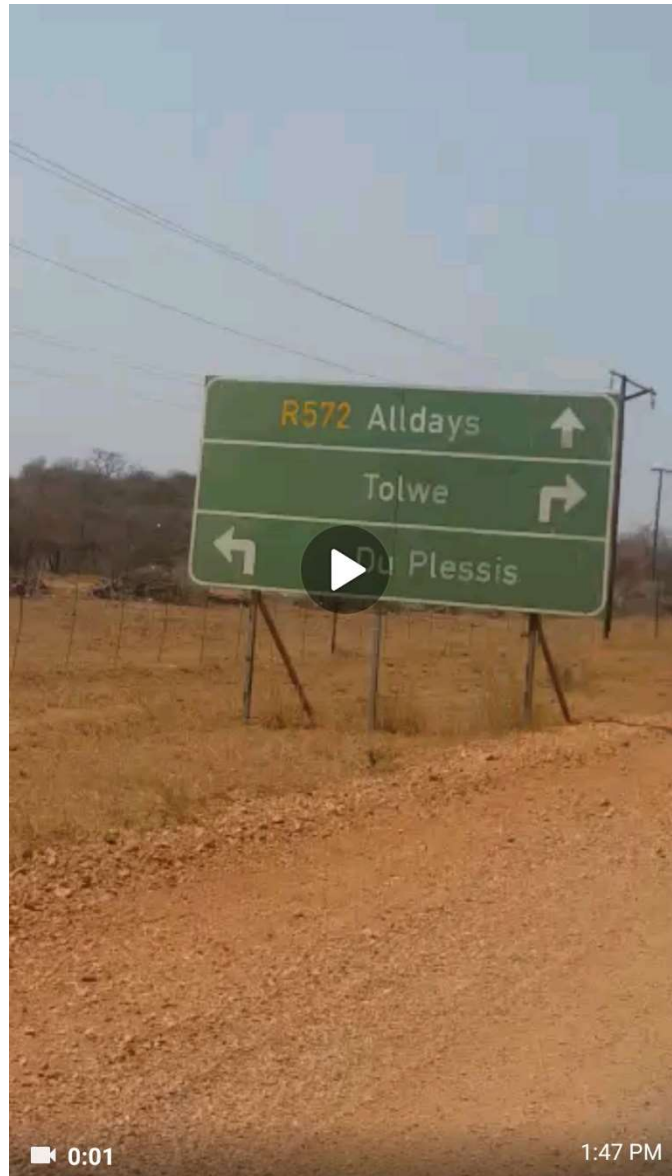
CONCERNS

- ▶ Farmers and Rural Communities are soft targets-
- ▶ Location – time for help to arrive
- ▶ Road Infrastructure
- ▶ Communication –
Telecommunication –
Cellphone towers –
- ▶ Police are under resourced

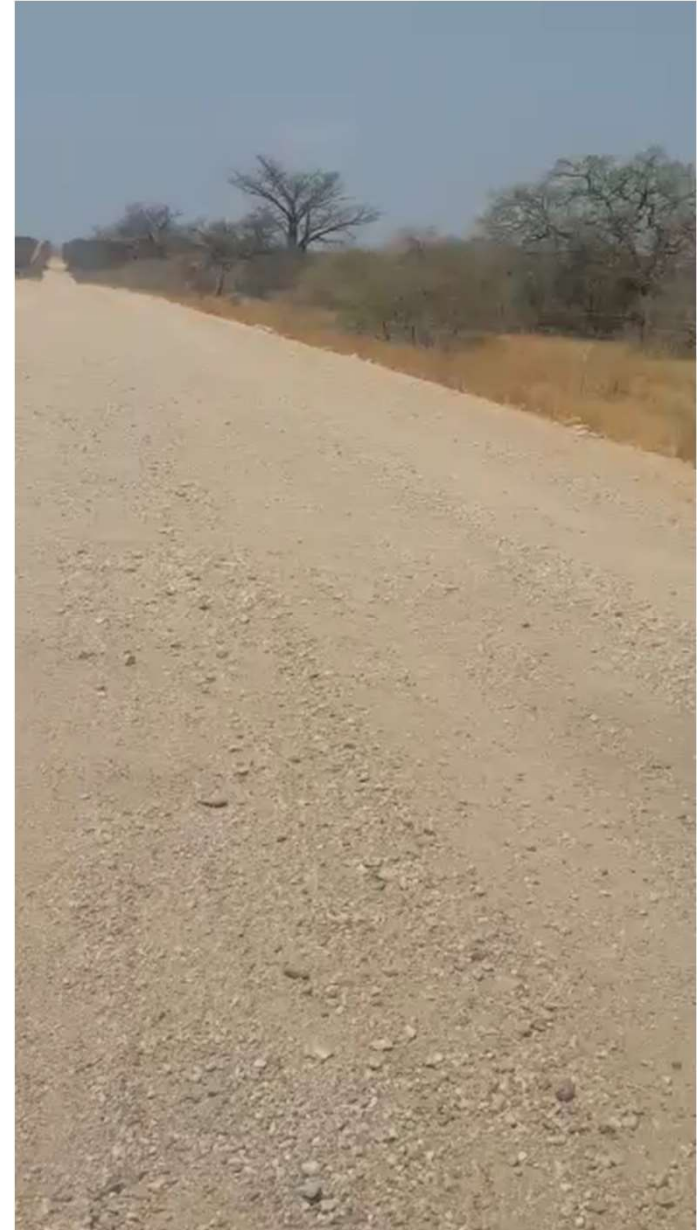
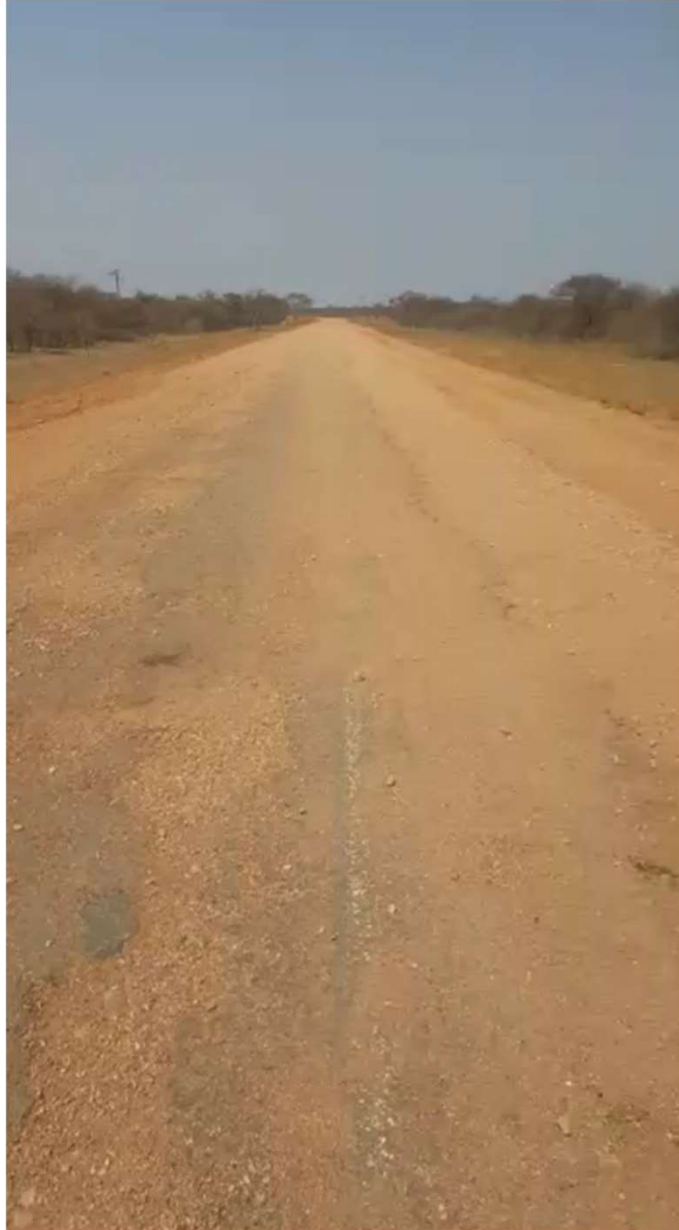




R572 – 74KM



R572 - Video





CONCERNS



- ▶ Informant Trust and building Relationships
- ▶ Crime scene investigation training – insufficient evidence
- ▶ Convictions -
- ▶ Political & Judiciary will to deal with political rhetoric and hate speech
- ▶ Disarming law-abiding Citizens



CONCERNS



- ▶ Clamp down on petty crime, eg
 - ▶ Blocking & Damage to road infrastructure – deploy POP – they don't have to sleep in a house in the same neighbourhood as the criminals they arrested / not arrested due to fear
 - ▶ Theft of batteries, cables, live stock, etc
- ▶ Document those in the Country
 - ▶ Statistics from day of deportation to return = 5 days

BORDERS - Musina



BORDERS



BORDERS











CONCERNS



- ▶ Municipalities have a Constitutional responsibility to create safe Communities
- ▶ Where does Municipalities fit in?



COMMITMENT



- ▶ As Agri Limpopo we reiterate our support of Government's National Rural Safety Strategy
- ▶ We want to see the NRSS implemented
- ▶ For this to happen it must be resourced (how much is being budgeted right now for its implementation in the 2020/2021 Financial Year?)
- ▶ We will need to see the rebuilding of lost state capabilities
- ▶ We will need to cement partnerships between Government and ALL sectors of Society - a resourcing of our collective goodwill, skills and capacities – for the common good